

MAIN FEATURES

Rope encoder series with steel rope available for lengths up to 15 m.
The attached encoder can be incremental or absolute.
Perfectly suitable also for harsh environments, thanks to its excellent mechanical resistance.
It can be used in wide range of applications such as: vertical warehouses, presses, extruders, etc.



ORDERING CODE

FES 3000 A -58B

SERIES
rope encoder for linear measures **FES**

WORKING STROKE
3 m **3000**
6 m **6000**
15 m **15000**

OUTPUT TYPE
horizontal output **A**

ENCODER FLANGE MODEL
58B

Incremental or absolute (model 58B) must be ordered together.
Please add the letter F in front of the standard encoder ordering code.
Example:

- 1) with incremental encoder ordering code will be : FER58B ...
- 2) with absolute multiturn encoder ordering code will be : FEAMR58B ...
- 3) with absolute Profinet multiturn encoder ordering code will be : FAAM58BR ...

Complete ordering code example:

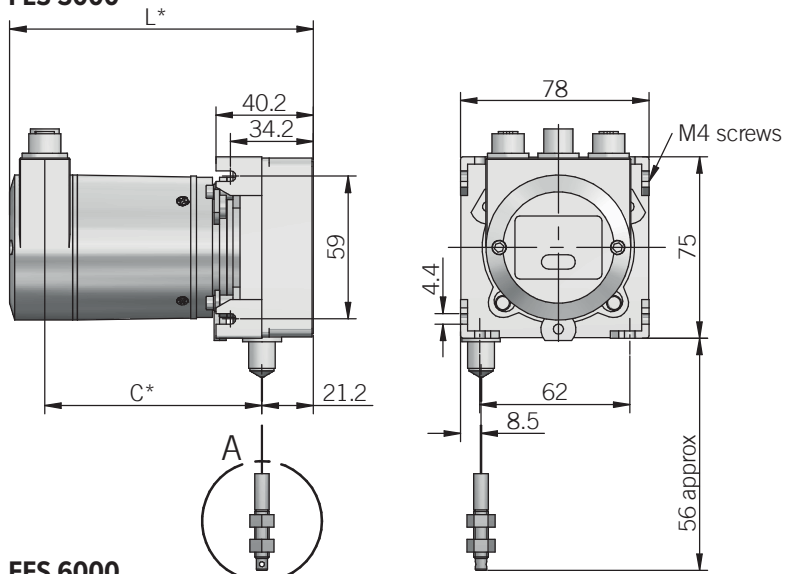
FES3000A-58B

FER58B1024Z5/28L6X3PR

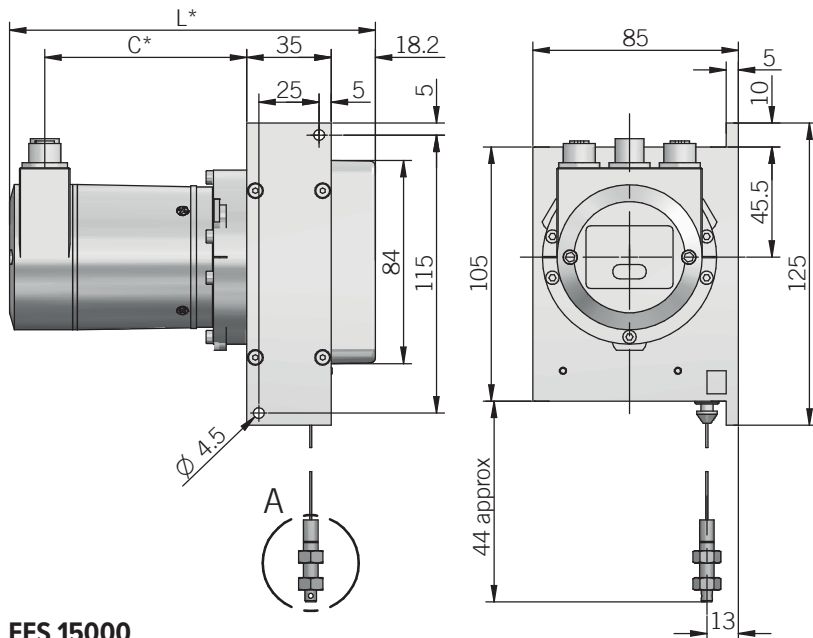
SPECIFICATIONS

Model	FES 3000	FES 6000	FES 15000
Max length measurement	3 m	6 m	15 m
Drum circumference	200 mm	200 mm	500 mm
Wire diameter	0,87 mm	0,6 mm	0,87 mm
System accuracy	/	± 0,1%	± 0,1%
Repeat accuracy	± 0,15 mm	± 0,15 mm	± 0,2 mm
Max speed	0,8 m/s	3 m/s	≤ 2,4 m/s
Max acceleration	/	≤ 23,5 m/s ²	/
Pull-out force required	≥ 3 N (0,67 lbs)	≥ 8 N (1,8 lbs)	≥ 15,5 N (3,48 lbs)
Housing material	aluminum / plastic		aluminium die casting
Rope material	steel		steel rope, synthetically coated
Enclosure rating	depends on encoder IP		
Shock (IEC 60068-2-27)	/	50 G, 11 ms	/
Vibrations (IEC 60068-2-6)	/	10 G, 5 ... 150 Hz	/
Operating temperature	-40° ... +80°C (-40° ... +176°F)	-20° ... +80°C (-4° ... +176°F)	-40° ... +80°C (-40° ... +176°F)
Weight	350 g (12,35 oz) + encoder	600 g (24,69 oz) + encoder	2500 g (88,18 oz) + encoder
(EMI-EMIP-ER 58B) L*	95 mm	120 mm	112 mm
(EAMR 58B) L*	98 mm	123 mm	115 mm
(AAM 58BR PROFINET/ETHERCAT) L*	125,5 mm	151 mm	143 mm
(EMI-EMIP-ER 58B) C*	57 mm	51 mm	41 mm
(EAMR 58B) C*	57 mm	51 mm	41 mm
(AAM 58BR PROFINET/ETHERCAT) C*	90 mm	83,5 mm	73,5 mm
Electromagnetic compatibility	see encoder		
RoHS	see encoder		

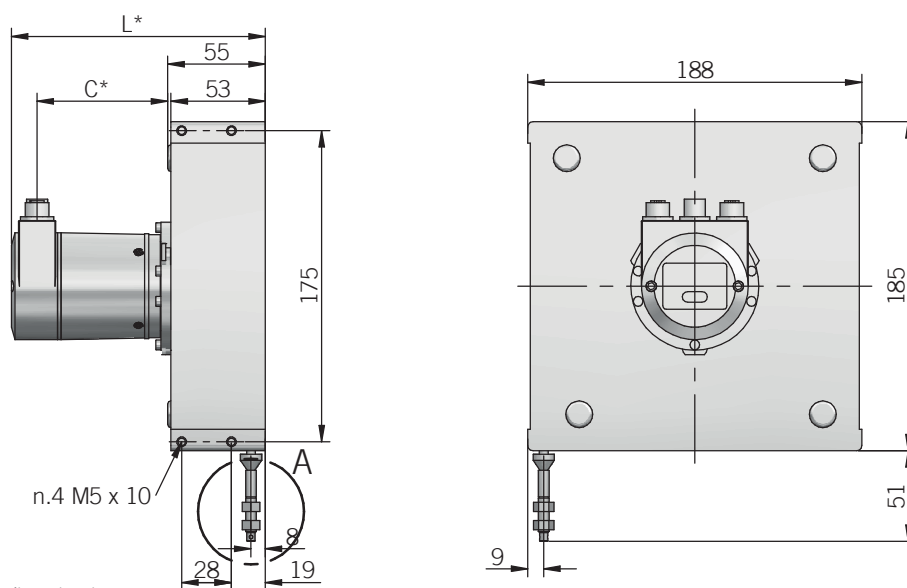
FES 3000



FES 6000



FES 15000



dimensions in mm

FES installation notes

A 5 mm wire extension is recommended before the measurement start point. This will prevent the wire from snapping back to the stop on when rewinding.
The wire should be pulled straight out in line with the wire outlet; the wire must not spring back loosely, it must be loaded by spring force in all situations and movements.
Do not twist or bend the wire seat or the wire.
Do not open the spring housing of the rope encoder.
Do not extend the wire beyond the specified maximum extension length

